

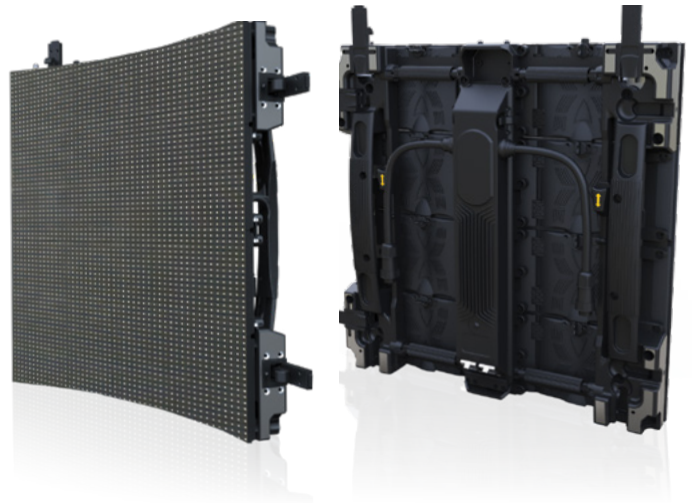
X SERIES

XSERIES

CURVED FLEXIBLE RENTAL DISPLAYS

VUEPIX INFILED X SERIES

- + Pixel Pitch: From 1.9 to 6.2 mm
- + Brightness: Up to 5,000 nits
- + Application: Creative Rental & Install
- + Environment: Indoor & Outdoor
- + IP Rating: IP30 & IP65 options



KEY FEATURES

- + Highly flexible, ultra thin & super light
- + Designed to create wave screen (up to 20° in 5 angled positions)
- + Featuring full black LEDs for excellent brightness & contrast ratio
- + Advanced magnetic connection system
- + Patented One-Action locking mechanism
- + Optional smart flash memory function
- + Available in both indoor & outdoor options
- + Can be suspended from a truss bar or floor mounted



Hot Swap



Magnetic Connection



Angle Adjustable



Low Power Consumption



Light Weight



Thin

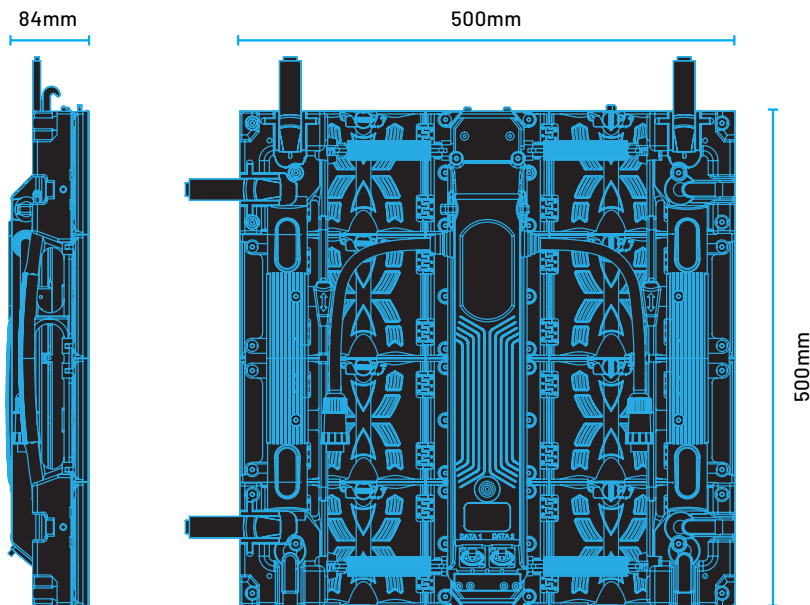
VUEPIX
INFILED

SPECIFICATIONS

	X1.9	X2.5	X2.9	X3	X6
Series	X	X	X	X	X
Pixel Pitch	1.95 mm	2.5 mm	2.9 mm	3.9 mm	6.25 mm
Environment	Indoor	Indoor	Indoor	Indoor	Outdoor
LED Configuration	1010 SMD	1515 SMD	2020 Black LED SMD	2020 Black LED SMD	1921 3 IN 1 SMD
Max. Brightness	1,000 nits	1,200 nits	1,200 nits	1,200 nits	5,000 nits
Refresh Rate	≤1,920 Hz	≤1,920 Hz	≤1,920 Hz	≤3,840 Hz	≤3,840 Hz
Viewing Angle	160°/160°	160°/160°	160°/160°	160°/160°	160°/160°
Cabinet Resolution	256 × 256 pixels	200 × 200 pixels	168 × 168 pixels	128 × 128 pixels	80 × 80 pixels
Cabinet Width	500 mm	500 mm	500 mm	500 mm	500 mm
Cabinet Height	500 mm	500 mm	500 mm	500 mm	500 mm
Cabinet Depth	84 mm	84 mm	84 mm	84 mm	84 mm
Cabinet Weight	9.5 kg	9.5 kg	9.5 kg	9.5 kg	9.5 kg
Max. Power Consumption	600 W /m ²	480 W /m ²	480 W /m ²	480 W /m ²	540 W /m ²
Aver. Power Consumption	200 W /m ²	160 W /m ²	160 W /m ²	160 W /m ²	180 W /m ²
Transparency	N/A	N/A	N/A	N/A	N/A
Curving	5 positions (20°,10°,0°,-10°,-20°)	5 positions (20°,10°,0°,-10°,-20°)	5 positions (20°,10°,0°,-10°,-20°)	5 positions (20°,10°,0°,-10°,-20°)	5 positions (20°,10°,0°,-10°,-20°)
Operating Power Source	100-240V AC, 50-60Hz	100-240V AC, 50-60Hz	100-240V AC, 50-60Hz	100-240V AC, 50-60Hz	100-240V AC, 50-60Hz
Operating Temperature	-10°C~+45°C	-10°C~+45°C	-10°C~+45°C	-10°C~+45°C	-10°C~+45°C
Ingress Protection	IP30	IP30	IP30	IP30	IP65 Front / IP54 Rear
Verification	CE, FCC, ETL, RoHS	CE, FCC, ETL, RoHS	CE, FCC, ETL, RoHS	CE, FCC, ETL, RoHS	CE, FCC, ETL, RoHS
Application	Rental / Install	Rental / Install	Rental / Install	Rental / Install	Rental / Install

Product specifications can be customised to suit your requirements.

DIMENSIONAL DRAWINGS



VuePix® Infiled is continually developing and improving all its products. We reserve the right to change specifications without prior notification. Images are representing but not necessarily a precise product reference. VuePix® Infiled shall be under no liability for any loss, damage or injury for direct or indirect dependence on the information contained in this catalogue. June 2021.

info@vuepix.tv | www.vuepix.tv

Australia: 1800 883 749 New Zealand: 09 218 6532 International: +61 7 5509 4633