

GX SERIES

# GXSERIES

ALL PURPOSE RENTAL

# GX Series

---

VuePix Infiled GX series offers lightweight LED panels with slim profile, ready to perform on any stage.

The panels come in two sizes and are equipped with user-friendly features like positioning pins and ergonomic handles for convenient handling, fast set-up and easy alignment.

Separate and exchangeable PDU allows for quick and easy maintenance with minimal downtime. Climbing handles can be added for convenient assembly and maintenance.

The VuePix GX series comes with a wide range of accessories, allowing for grand support or various hanging options. Curved screen can be easily achievable with additional angle couplers.

Both indoor and outdoor models are available.

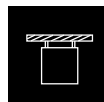


IP65

IP65



Light Weight



Rental &  
Touring



Thin

## Light weight cabinets with slim profile

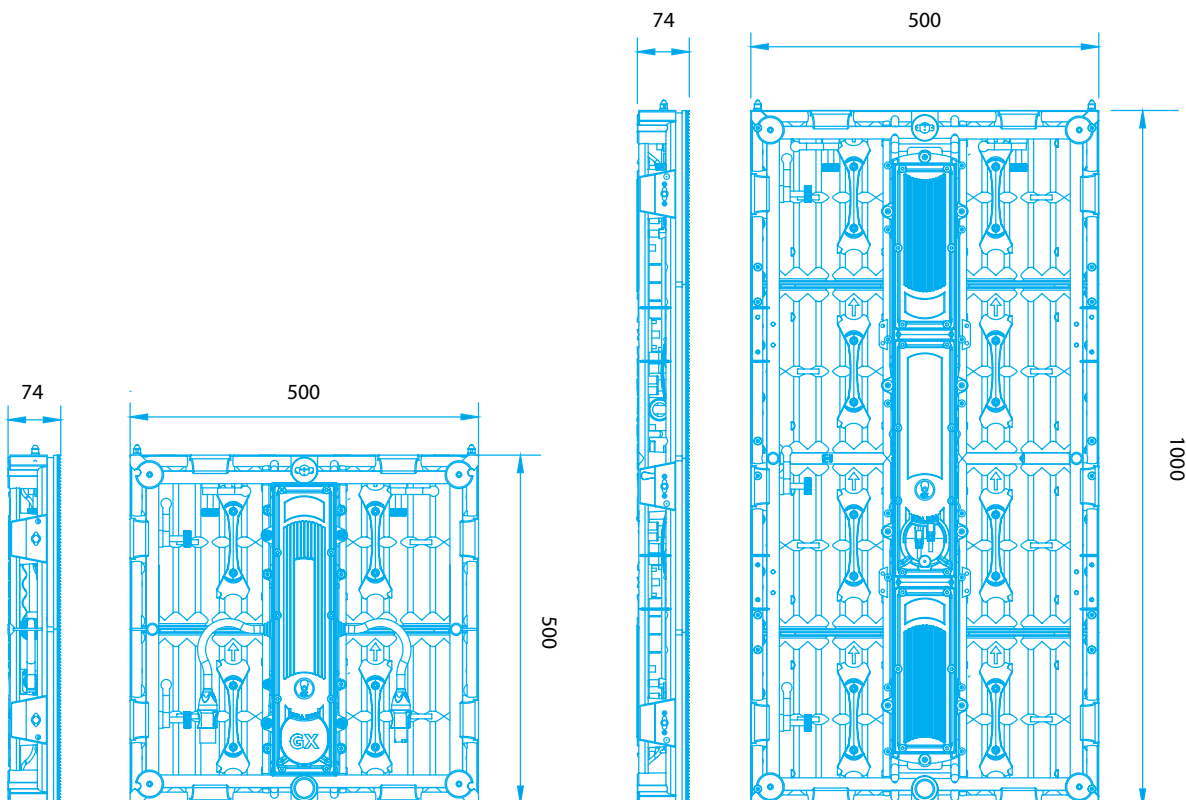
---

GX series cabinets are light weight yet durable with die-cast magnesium and aluminum housing.



## Full size panels & Half size panels available

---



Front & Rear  
maintenance supported

---

Straight or Curved

---

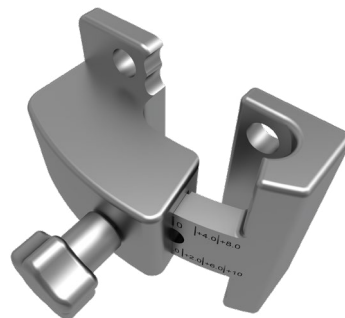


Curved Screen Optional

Bend angle can reach to  $+10^{\circ}$

## Angler Coupler

Using the Angle Coupler for concave  
& convex angles can reach to  $+10^{\circ}$  with 11 steps.  
Angle Coupler is optional

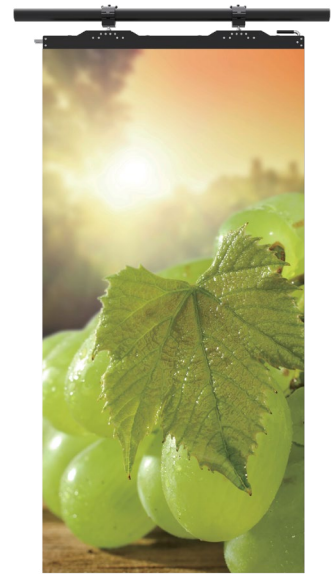
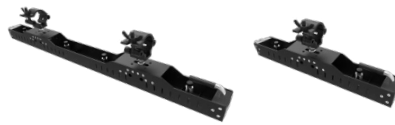


# Various Configurations

---

## Hanging System

Truss bars are available in different sizes and modifications for straight or curved applications.



## Stacking System

Pedestals are available for double and triple panel configurations.



## Separate & exchangeable PDU

---

Separate and exchangeable PDU allows for quick and easy maintenance with minimal downtime.



# Specifications - Indoor Panels

	GX Indoor P1 Half Panel	GX Indoor P2.5 Half Panel	GX Indoor P2.9 Half Panel	GX Indoor P3 Half Panel	GX Outdoor P4.8 Half Panel
Series	GX	GX	GX	GX	GX
Pixel Pitch	1.95 mm	2.55 mm	2.97 mm	3.91 mm	4.81 mm
Environment	Indoor	Indoor	Indoor	Indoor	Indoor
LED Configuration	3 IN 1 SMD	3 IN 1 SMD	3 IN 1 SMD	3 IN 1 SMD	3 IN 1 SMD
Max. Brightness	800 nits	1,000 nits	1,000 nits	1,000 nits	1,000 nits
Refresh Rate	≤3,840 Hz	≤3,840 Hz	≤3,840 Hz	≤3,840 Hz	≤3,840 Hz
Viewing Angle	160° / 160°	160° / 160°	160° / 160°	160° / 160°	160° / 160°
Cabinet Resolution	256 × 256 pixels	200 × 200 pixels	168 × 168 pixels	128 × 128 pixels	104 × 104 pixels
Cabinet Width	500 mm	500 mm	500 mm	500 mm	500 mm
Cabinet Height	500 mm	500 mm	500 mm	500 mm	500 mm
Cabinet Depth	74 mm	74 mm	74 mm	74 mm	74 mm
Cabinet Weight	7.7 kg	8 kg	12.1 kg	12.5 kg	12.5 kg
Max. Power Consumption	520 W/ m², 130 W/panel	600 W/ m², 150 W/panel	600 W/ m², 150 W/panel	600 W/ m², 150 W/panel	600 W/ m², 150 W/panel
Aver. Power Consumption	74 W/ m², 43 W/panel	200 W/ m², 50 W/panel	200 W/ m², 50 W/panel	200 W/ m², 50 W/panel	200 W/ m², 50 W/panel
Transparency	N/A	N/A	N/A	N/A	N/A
Curving	Optional	Optional	Optional	Optional	Optional
Operating Power Source	100-240V AC, 50-60Hz	100-240V AC, 50-60Hz	100-240V AC, 50-60Hz	100-240V AC, 50-60Hz	100-240V AC, 50-60Hz
Operating Temperature	-10°C ~ +45°C	-10°C ~ +45°C	-10°C ~ +45°C	-10°C ~ +45°C	-10°C ~ +45°C
Ingress Protection	IP30	IP30	IP30	IP30	IP30
Verification	CE, ETL, FCC, RoHS, RCM	CE, ETL, FCC, RoHS, RCM	CE, ETL, FCC, RoHS, RCM	CE, ETL, FCC, RoHS, RCM	CE, ETL, FCC, RoHS, RCM
Application	Rental / Install	Rental / Install	Rental / Install	Rental / Install	Rental / Install

	GX Indoor P3	GX Indoor P4.8
Series	GX	GX
Pixel Pitch	3.91 mm	4.81 mm
Environment	Indoor	Indoor
LED Configuration	3 IN 1 SMD	3 IN 1 SMD
Max. Brightness	1,000 nits	1,000 nits
Refresh Rate	≤3,840 Hz	≤3,840 Hz
Viewing Angle	160° / 160°	160° / 160°
Cabinet Resolution	128 × 256 pixels	104 × 208 pixels
Cabinet Width	500 mm	500 mm
Cabinet Height	1,000 mm	1,000 mm
Cabinet Depth	74 mm	74 mm
Cabinet Weight	12.5 kg	12.5 kg
Max. Power Consumption	600 W/ m², 300 W/panel	600 W/ m², 300 W/panel
Aver. Power Consumption	200 W/ m², 100 W/panel	200 W/ m², 100 W/panel
Transparency	N/A	N/A
Curving	Optional	Optional
Operating Power Source	100-240V AC, 50-60Hz	100-240V AC, 50-60Hz
Operating Temperature	-10°C ~ +45°C	-10°C ~ +45°C
Ingress Protection	IP30	IP30
Verification	CE, CB, FCC, CCC, RoHS	CE, CB, FCC, CCC, RoHS
Application	Rental / Install	Rental / Install

# Specifications - Outdoor Panels

	GX Outdoor P3 Half Panel	GX Outdoor P4.6 Half Panel	GX Outdoor P5 Half Panel	GX Outdoor P6 Half Panel
Series	GX	GX	GX	GX
Pixel Pitch	3.91 mm	4.63 mm	5.95 mm	6.94 mm
Environment	Outdoor	Outdoor	Outdoor	Outdoor
LED Configuration	3 IN 1 SMD	3 IN 1 SMD	3 IN 1 SMD	3 IN 1 SMD
Max. Brightness	5,000 nits	5,000 nits	5,000 nits	5,000 nits
Refresh Rate	≤3,840 Hz	≤3,840 Hz	≤3,840 Hz	≤3,840 Hz
Viewing Angle	160° / 155°	160° / 135°	160° / 135°	160° / 130°
Cabinet Resolution	128 x 128 pixels	108 x 108 pixels	84 x 84 pixels	72 x 72 pixels
Cabinet Width	500 mm	500 mm	500 mm	500 mm
Cabinet Height	500 mm	500 mm	500 mm	500 mm
Cabinet Depth	74 mm	76 mm	76 mm	75 mm
Cabinet Weight	12.3 kg	12.3 kg	12.3 kg	12 kg
Max. Power Consumption	600 W/ m², 150 W/panel	680 W/ m², 170 W/panel	680 W/ m², 170 W/panel	680 W/ m², 170 W/panel
Aver. Power Consumption	200 W/ m², 50 W/panel	170 W/ m², 57 W/panel	170 W/ m², 57 W/panel	170 W/ m², 57 W/panel
Transparency	N/A	N/A	N/A	N/A
Curving	Optional	Optional	Optional	Optional
Operating Power Source	100-240V AC, 50-60Hz	100-240V AC, 50-60Hz	100-240V AC, 50-60Hz	100-240V AC, 50-60Hz
Operating Temperature	-10°C ~ +45°C	-10°C ~ +45°C	-10°C ~ +45°C	-10°C ~ +45°C
Ingress Protection	IP65 Front / IP54 Rear	IP65 Front / IP54 Rear	IP65 Front / IP54 Rear	IP65 Front / IP54 Rear
Verification	CE, ETL, FCC, RoHS, RCM	CE, ETL, FCC, RoHS, RCM	CE, ETL, FCC, RoHS, RCM	CE, ETL, FCC, RoHS, RCM
Application	Rental / Install	Rental / Install	Rental / Install	Rental / Install

	GX Outdoor P3	GX Outdoor P4.6	GX Outdoor P5	GX Outdoor P6
Series	GX	GX	GX	GX
Pixel Pitch	3.91 mm	4.63 mm	5.95 mm	6.94 mm
Environment	Outdoor	Outdoor	Outdoor	Outdoor
LED Configuration	3 IN 1 SMD	3 IN 1 SMD	3 IN 1 SMD	3 IN 1 SMD
Max. Brightness	5,000 nits	5,000 nits	5,000 nits	5,000 nits
Refresh Rate	≤3,840 Hz	≤3,840 Hz	≤3,840 Hz	≤3,840 Hz
Viewing Angle	160° / 155°	160° / 135°	160° / 135°	160° / 130°
Cabinet Resolution	128 x 256 pixels	108 x 216 pixels	84 x 168 pixels	72 x 144 pixels
Cabinet Width	500 mm	500 mm	500 mm	500 mm
Cabinet Height	1,000 mm	1,000 mm	1,000 mm	1,000 mm
Cabinet Depth	74 mm	76 mm	76 mm	75 mm
Cabinet Weight	12.3 kg	12.3 kg	12.3 kg	12 kg
Max. Power Consumption	600 W/ m², 300 W/panel	680 W/ m², 340 W/panel	680 W/ m², 340 W/panel	680 W/ m², 340 W/panel
Aver. Power Consumption	200 W/ m², 100 W/panel	226 W/ m², 113 W/panel	226 W/ m², 113 W/panel	226 W/ m², 113 W/panel
Transparency	N/A	N/A	N/A	N/A
Curving	Optional	Optional	Optional	Optional
Operating Power Source	100-240V AC, 50-60Hz	100-240V AC, 50-60Hz	100-240V AC, 50-60Hz	100-240V AC, 50-60Hz
Operating Temperature	-10°C ~ +45°C	-10°C ~ +45°C	-10°C ~ +45°C	-10°C ~ +45°C
Ingress Protection	IP65 Front / IP54 Rear	IP65 Front / IP54 Rear	IP65 Front / IP54 Rear	IP65 Front / IP54 Rear
Verification	CE, CB, FCC, CCC, ETL, RoHS	CE, CB, FCC, CCC, RoHS	CE, CB, FCC, CCC, RoHS	CE, CB, FCC, CCC, RoHS
Application	Rental / Install	Rental / Install	Rental / Install	Rental / Install

Product specifications can be customised

VuePix® Infilled is continually developing and improving all its products. We reserve the right to change specifications without prior notification. Images are representing but not necessarily a precise product reference. VuePix® Infilled shall be under no liability for any loss, damage or injury for direct or indirect dependence on the information contained in this catalogue. January 2024.



LEADERS IN LED SCREENS & DIGITAL DISPLAYS

[info@vuepix.tv](mailto:info@vuepix.tv) | [www.vuepix.tv](http://www.vuepix.tv)

Australia: 1800 883 749   New Zealand: 09 218 6532   International: +61 7 5509 4633