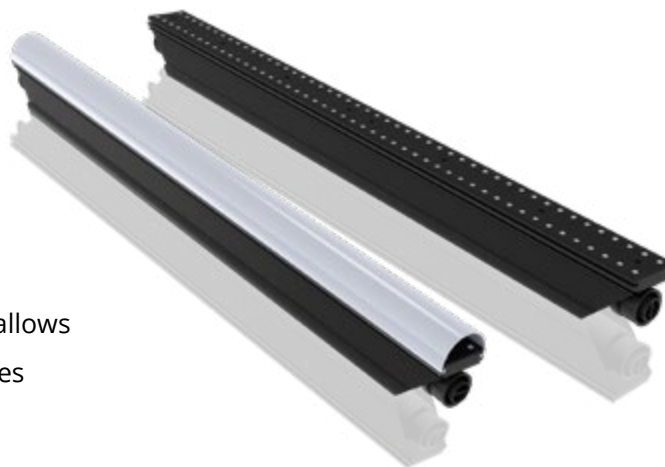


VUESTRIP

LINEAR LED SOLUTIONS

The VueStrip provides new creative possibilities and allows designers to think outside of the square when it comes to LED digital displays. .



The lightweight linear housing and modular design makes these high-brightness LED strips perfect for any creative application. With advanced IP65 protection, VueStrips can be used for any outdoor events and spaces.

VueStrip offers a wide range of accessories, including different types of brackets for various installation methods. A range of diffusers is also available for special effects.

SPECIFICATIONS

- + **Pixel Pitch:** 10.41mm x 20.81mm
- + **Brightness:** 4,000 nits
- + **Application:** Install / Rental
- + **Environment:** Indoor / Outdoor
- + **IP Rating:** IP65

KEY FEATURES

- + Linear LED rental solution
- + Range of mounting & installation option
- + Lightweight construction
- + Supports various control systems
- + IP65 protection



IP65



Lightweight



Easy Installation

VUESTRIP SPECIFICATIONS

	VUESTRIP Outdoor P10-500	VUESTRIP Outdoor P10-1000
Series	VueStrip	VueStrip
Pixel Pitch	10.41 x 20.82 mm	10.41 x 20.82 mm
Environment	Outdoor	Outdoor
LED Configuration	3 in 1 SMD	3 in 1 SMD
Max. Brightness	4,000 nits	4,000 nits
Refresh Rate	≤1,000 Hz	≤1,000 Hz
Viewing Angle	160°/160°	160°/160°
Cabinet Resolution	48 x 2 pixels	96 x 2 pixels
Cabinet Width	500 mm	1,000 mm
Cabinet Height	33 mm	33 mm
Cabinet Depth	41 mm	56 mm
Cabinet Weight	0.6 kg	1 kg
Max. Power Consumption	8 W /strip	15 W /strip
Aver. Power Consumption	3 W /strip	5 W /strip
Transparency	N/A	N/A
Curving	N/A	N/A
Operating Power Source	100-240V AC, 50-60Hz	100-240V AC, 50-60Hz
Operating Temperature	-10°C~+45°C	-10°C~+45°C
Ingress Protection	IP65	IP65
Verification	CE, RoHS, EMC, TUV	CE, RoHS, EMC, TUV
Application	Install / Rental	Install / Rental

VuePix® Infiled is continually developing and improving all its products. We reserve the right to change specifications without prior notification. Images are representing but not necessarily a precise product reference. VuePix® Infiled shall be under no liability for any loss, damage or injury for direct or indirect dependence on the information contained in this catalogue. January 2024.



Contact our VuePix Infiled experts to discuss your next project

AUS: 1800 883 749 NZ: 09 218 6532 INT: +61 7 5509 4633 | info@vuepix.tv | www.vuepix.tv

LEADERS IN LED SCREENS & DIGITAL DISPLAYS